

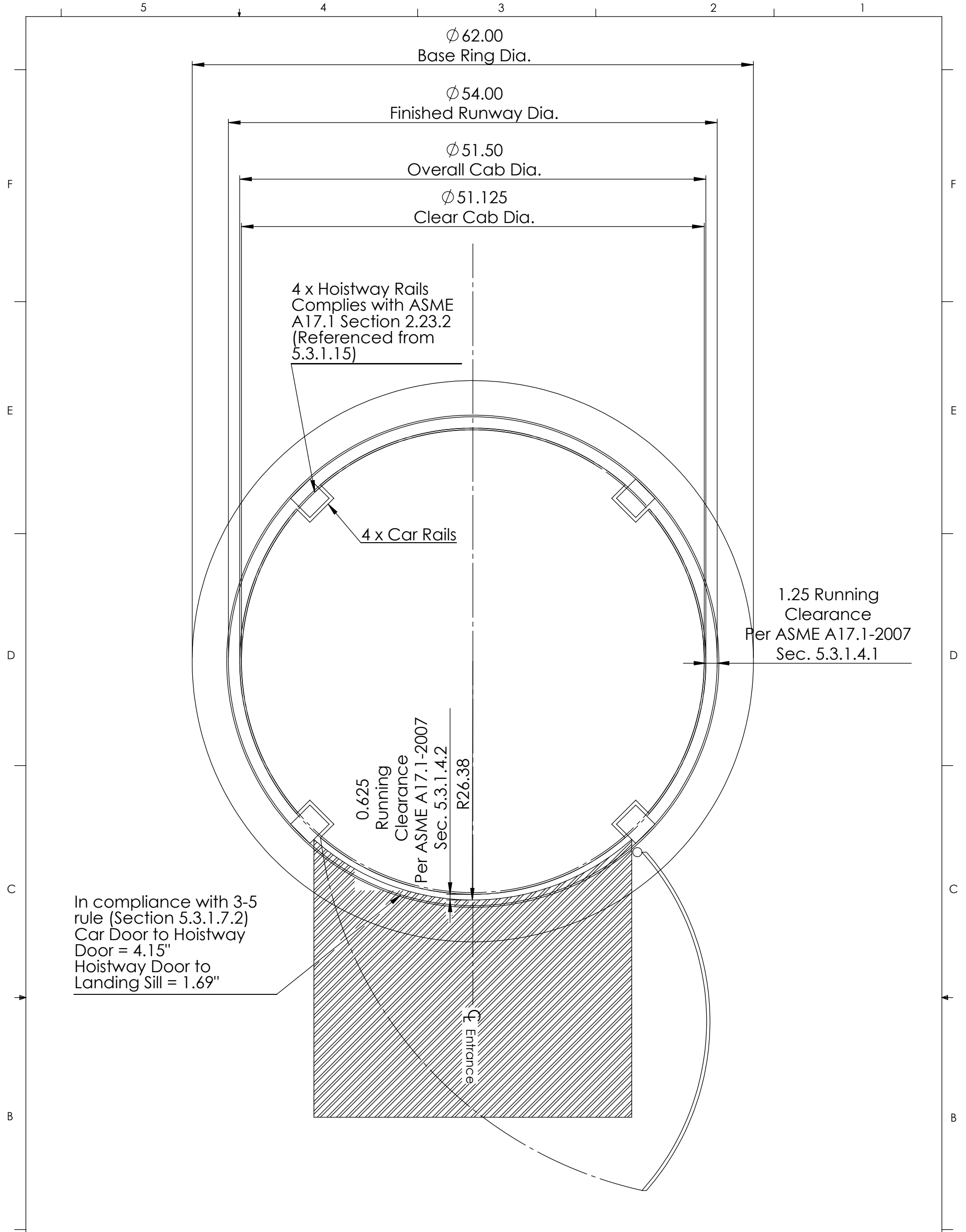
Design, manufacturing and installation complies with ASME A17.1 2007, Section 5.3

Design, manufacturing and installation complies with NEC 2008

**PROPRIETARY AND CONFIDENTIAL**  
 THE INFORMATION CONTAINED IN THIS DRAWING IS THE SOLE PROPERTY OF VISILIFT, LLC. ANY REPRODUCTION IN PART OR AS A WHOLE WITHOUT THE WRITTEN PERMISSION OF VISILIFT, LLC IS PROHIBITED.

| UNLESS OTHERWISE SPECIFIED:          |                      | NAME        | DATE |
|--------------------------------------|----------------------|-------------|------|
| DIMENSIONS ARE IN INCHES             |                      | DRAWN       |      |
| TOLERANCES:                          |                      | CHECKED     |      |
| FRACTIONAL ±                         |                      | ENG APPR.   |      |
| ANGULAR: MACH ± BEND ±               |                      | MFG APPR.   |      |
| TWO PLACE DECIMAL ±                  |                      | Q.A.        |      |
| THREE PLACE DECIMAL ±                |                      | COMMENTS:   |      |
| INTERPRET GEOMETRIC TOLERANCING PER: |                      | Printed:    |      |
| MATERIAL                             |                      | Last Saved: |      |
| FINISH                               |                      |             |      |
| APPLICATION                          | DO NOT SCALE DRAWING |             |      |

|   |  |     |
|---|--|-----|
| <b>VISILIFT, LLC</b>  |  |     |
| TITLE:<br>Vision 830/Visi-58<br>Typical Installation Plan Set |  |     |
| SIZE<br><b>B</b>  | DWG. NO.<br>Visi 58/Vision 830 -<br>Elevation View | REV |
| SCALE: 1:30   | SHEET 1 OF 7                                       |     |



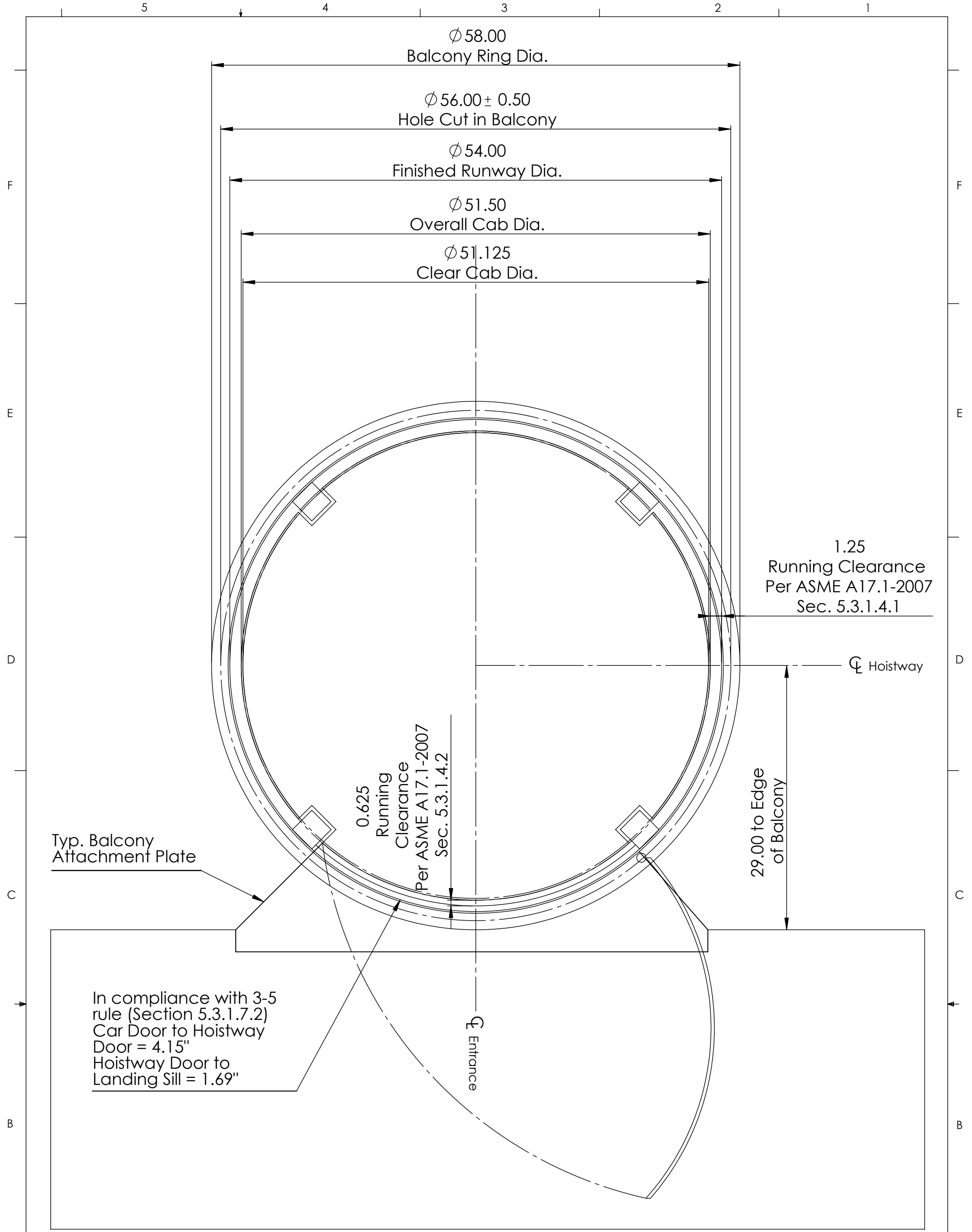
Design, manufacturing and installation complies with ASME A17.1 2007, Section 5.3

Design, manufacturing and installation complies with NEC 2008

**PROPRIETARY AND CONFIDENTIAL**  
 THE INFORMATION CONTAINED IN THIS DRAWING IS THE SOLE PROPERTY OF VISILIFT, LLC. ANY REPRODUCTION IN PART OR AS A WHOLE WITHOUT THE WRITTEN PERMISSION OF VISILIFT, LLC IS PROHIBITED.

| UNLESS OTHERWISE SPECIFIED:          |  | NAME      | DATE |
|--------------------------------------|--|-----------|------|
| DIMENSIONS ARE IN INCHES             | FRACTIONAL $\pm$<br>ANGULAR: MACH $\pm$ BEND $\pm$<br>TWO PLACE DECIMAL $\pm$<br>THREE PLACE DECIMAL $\pm$ | DRAWN     |      |
|                                      |  | CHECKED   |      |
|                                      |  | ENG APPR. |      |
|                                      |  | MFG APPR. |      |
| INTERPRET GEOMETRIC TOLERANCING PER: |  | Q.A.      |      |
| MATERIAL                             | COMMENTS:  |           |      |
| FINISH                               | Printed:   |           |      |
| APPLICATION                          | Last Saved:  |           |      |
|                                      | DO NOT SCALE DRAWING   |           |      |

|   |   |     |
|---|---|-----|
| <b>VISILIFT, LLC</b>  |   |     |
| TITLE:<br>Vision 830/Visi-58<br>Typical Installation Plan Set |   |     |
| SIZE<br><b>B</b>  | DWG. NO.<br>Visi-58/Vision 830 -<br>Plan View - Landing 1 | REV |
| SCALE: 1:10   | SHEET 2 OF 7  |     |



Typ. Balcony Attachment Plate

In compliance with 3-5 rule (Section 5.3.1.7.2)  
 Car Door to Hoistway Door = 4.15"  
 Hoistway Door to Landing Sill = 1.69"

0.625 Running Clearance  
 Per ASME A17.1-2007 Sec. 5.3.1.4.2

1.25 Running Clearance  
 Per ASME A17.1-2007 Sec. 5.3.1.4.1

29.00 to Edge of Balcony

Design, manufacturing and installation complies with ASME A17.1 2007, Section 5.3

Design, manufacturing and installation complies with NEC 2008

**PROPRIETARY AND CONFIDENTIAL**  
 THE INFORMATION CONTAINED IN THIS DRAWING IS THE SOLE PROPERTY OF VISILIFT, LLC. ANY REPRODUCTION IN PART OR AS A WHOLE WITHOUT THE WRITTEN PERMISSION OF VISILIFT, LLC IS PROHIBITED.

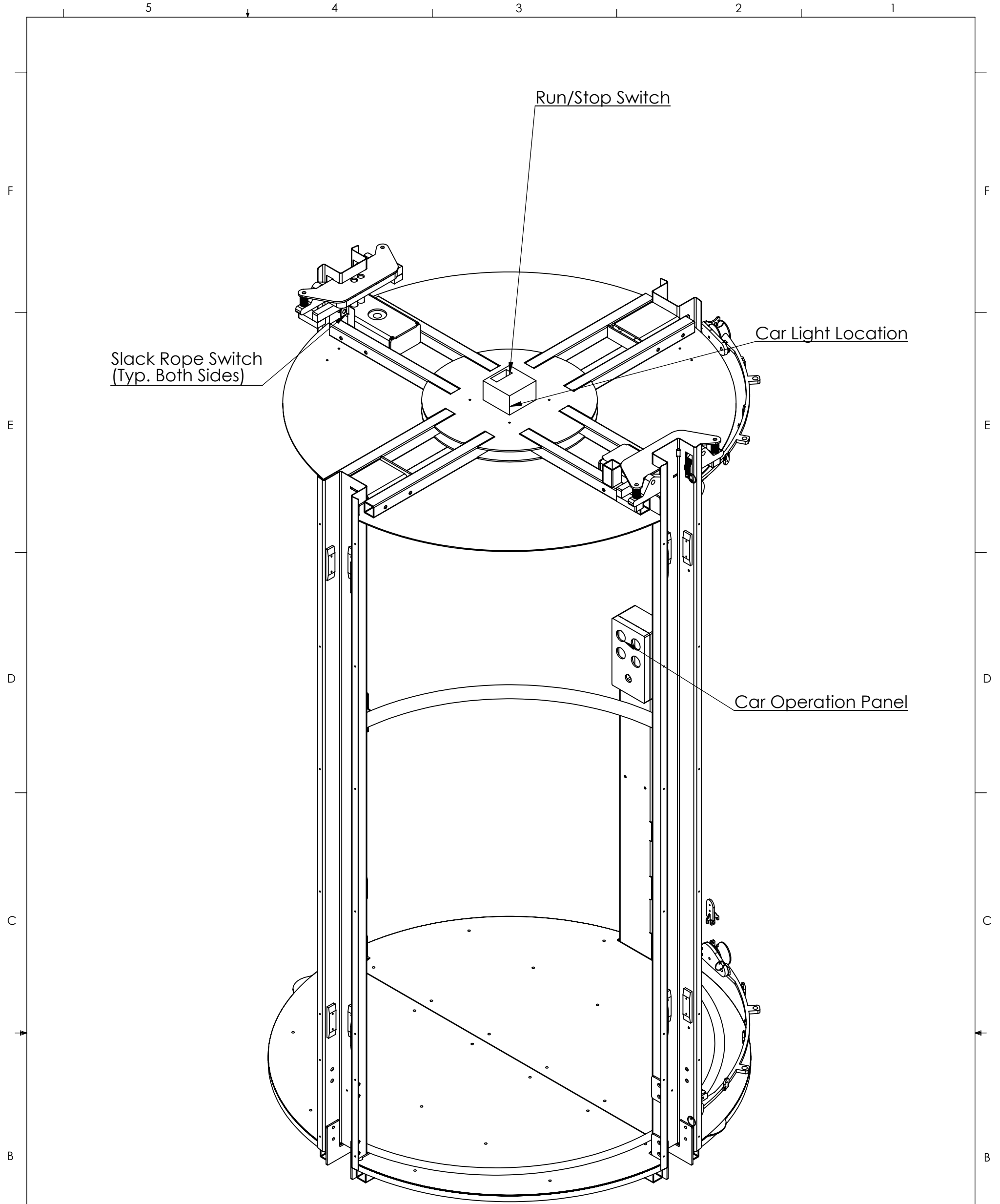
| UNLESS OTHERWISE SPECIFIED:          |                      | NAME | DATE |
|--------------------------------------|----------------------|------|------|
| DIMENSIONS ARE IN INCHES             | DRAWN                |      |      |
| TOLERANCES:                          | CHECKED              |      |      |
| FRACTIONAL ±                         | ENG APPR.            |      |      |
| ANGULAR: MACH ± BEND ±               | MFG APPR.            |      |      |
| TWO PLACE DECIMAL ±                  | Q.A.                 |      |      |
| THREE PLACE DECIMAL ±                | COMMENTS:            |      |      |
| INTERPRET GEOMETRIC TOLERANCING PER: | Printed:             |      |      |
| MATERIAL                             | Last Saved:          |      |      |
| FINISH                               |                      |      |      |
| APPLICATION                          | DO NOT SCALE DRAWING |      |      |

**VISILIFT, LLC**

TITLE: Vision 830/Visi-58  
 Typical Installation Plan Set

SIZE **B** DWG. NO. Visi 58/Vision 830 - Plan View Landings 2 and 3 REV

SCALE: 1:10 SHEET 3 OF 7



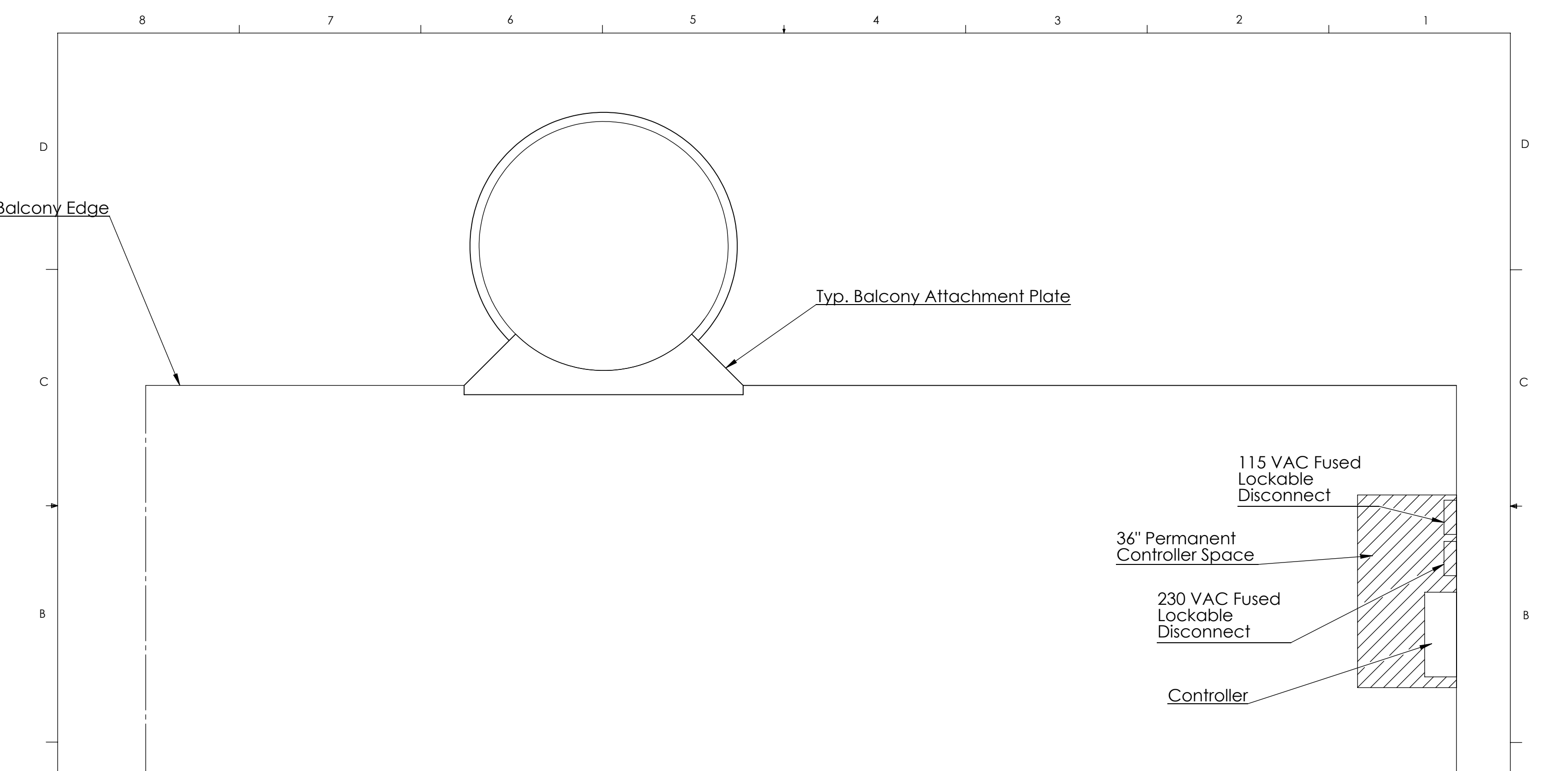
**NOTE:** Car is provided with 16 bumpers underneath. Bumpers are not required by code.

Design, manufacturing and installation complies with ASME A17.1 2007, Section 5.3

Design, manufacturing and installation complies with NEC 2008

**PROPRIETARY AND CONFIDENTIAL**  
 THE INFORMATION CONTAINED IN THIS DRAWING IS THE SOLE PROPERTY OF VISILIFT, LLC. ANY REPRODUCTION IN PART OR AS A WHOLE WITHOUT THE WRITTEN PERMISSION OF VISILIFT, LLC IS PROHIBITED.

|  |  |   |  |  |      |   |                                |        |
|--|--|---|--|--|------|---|--------------------------------|--------|
|  |  | UNLESS OTHERWISE SPECIFIED:   |  | NAME   | DATE | <b>VISILIFT, LLC</b>                                |                                |        |
|  |  | DIMENSIONS ARE IN INCHES<br>TOLERANCES:<br>FRACTIONAL ±<br>ANGULAR: MACH ± BEND ±<br>TWO PLACE DECIMAL ±<br>THREE PLACE DECIMAL ± |  | DRAWN  |      |   |                                | TITLE: |
|  |  | INTERPRET GEOMETRIC TOLERANCING PER:  |  | CHECKED  |      | Vision 830/Visi-58<br>Typical Installation Plan Set |                                |        |
|  |  | MATERIAL  |  | ENG APPR.  |      |   |                                |        |
|  |  | FINISH  |  | MFG APPR.  |      | SIZE  | DWG. NO.                       | REV    |
|  |  | APPLICATION   |  | Q.A.   |      | <b>B</b>  | Car Top Electrical Switch Loc. |        |
|  |  | DO NOT SCALE DRAWING  |  | COMMENTS:<br>Printed: 1/9/2012<br>Last Saved: 1/9/2012 |      | SCALE: 1:20   | SHEET 4 OF 7                   |        |



Design, manufacturing and installation complies with ASME A17.1 2007, Section 5.3

Design, manufacturing and installation complies with NEC 2008

**PROPRIETARY AND CONFIDENTIAL**  
 THE INFORMATION CONTAINED IN THIS DRAWING IS THE SOLE PROPERTY OF VISILIFT, LLC. ANY REPRODUCTION IN PART OR AS A WHOLE WITHOUT THE WRITTEN PERMISSION OF VISILIFT, LLC IS PROHIBITED.

|             |  |   |  |           |      |  |                                      |   |
|-------------|--|---|--|-----------|------|--|--------------------------------------|---|
|             |  | UNLESS OTHERWISE SPECIFIED:   |  | NAME      | DATE | <b>VISILIFT, LLC</b>                       |                                      |   |
|             |  | DIMENSIONS ARE IN INCHES<br>TOLERANCES:<br>FRACTIONAL ±<br>ANGULAR: MACH ± BEND ±<br>TWO PLACE DECIMAL ±<br>THREE PLACE DECIMAL ± |  | DRAWN     |      |  |                                      | TITLE:<br>Vision 830/Visi-58<br>Typical Installation Plan Set |
|             |  | INTERPRET GEOMETRIC TOLERANCING PER:  |  | CHECKED   |      | SIZE                                       | DWG. NO.                             |   |
|             |  | MATERIAL  |  | ENG APPR. |      | <b>B</b>                                   | Remote Controller Location (if Req.) |   |
| NEXT ASSY   |  | USED ON   |  | MFG APPR. |      |  |                                      | SCALE: 1:20   |
| APPLICATION |  | DO NOT SCALE DRAWING  |  | Q.A.      |      | Printed: 5/13/2010<br>Last Saved: 1/9/2012 |                                      |   |

## PROVISIONS BY OTHERS

- GENERAL**

CONSTRUCTION SITE: OWNER/AGENT TO PROVIDE ALL MASONRY, CARPENTRY AND DRYWALL WORK AS REQUIRED. FLOORS SHALL BE IN FINISHED STATE PRIOR TO INSTALLATION OF UNIT.

DIMENSIONS: CONTRACTOR/CUSTOMER TO VERIFY ALL CLEARANCE DIMENSIONS PRIOR TO UNIT DELIVERY.

- STRUCTURAL**

FLOOR LOADS: STRUCTURAL ENGINEER TO ASSURE THAT BUILDING WILL SAFELY SUPPORT ALL LOADS IMPOSED BY THE LIFT EQUIPMENT. REFER TO TABLES ON THIS DRAWING FOR PIT/FLOOR LOADS IMPOSED BY THE EQUIPMENT.

**NOTE: PER ASME A17.1-2007**

**THE CLEARANCE BETWEEN THE HOISTWAY DOORS OR GATES AND THE HOISTWAY EDGE OF THE LANDING SILL SHALL NOT EXCEED 3 in. THE DISTANCE BETWEEN THE HOISTWAY FACE OF THE LANDING DOOR OR GATE AND THE CAR DOOR OR GATE SHALL NOT EXCEED 5 in.**

- ELECTRICAL**

POWER SUPPLY: (SEE SPECIFICATIONS BELOW) LOCKABLE FUSED DISCONNECTS INSTALLED IN COMPLIANCE WITH ELECTRICAL CODE TO BE PROVIDED PRIOR TO INSTALLATION. ROUGHED IN POWER TO LIFT UNIT MUST BE PROVIDED TO HEAD ASSEMBLY LOCATION PRIOR TO INSTALLATION.

PERMANENT POWER: BEFORE INSTALLATION CAN BEGIN, PERMANENT POWER MUST BE SUPPLIED.

- ENTRANCES**

HANDRAILS: ALL BALCONY LEVELS REQUIRE HANDRAILS TO BE INSTALLED PER LOCAL CODES AFTER INSTALLATION IS COMPLETED. HANDRAIL AND INSTALLATION TO BE PROVIDED BY CONTRACTOR/CUSTOMER. VISILIFT, LLC AND/OR LOCAL INSTALLER ARE NOT RESPONSIBLE FOR HANDRAIL INSTALLATION OR MATERIALS.

| POWER SUPPLY SPECIFICATIONS | DISCONNECT SIZE | TIME DELAY FUSE SIZE | VOLTS    | PHASE  |
|-----------------------------|-----------------|----------------------|----------|--------|
| MOTOR AND EQUIP.            | 30 AMPS         | 30 AMPS              | 230 VOLT | SINGLE |
| CAB LIGHTS                  | 15 AMPS         | 15 AMPS              | 115 VOLT | SINGLE |

## SPECIFICATIONS

**GENERAL**

CLASSIFICATION: Residential - Single Family  
 APPLIED CODE: ASME A17.1-2007 SECTION 5.3  
 NEC 2008

WALLS: Full Clear Acrylic - Complies with ANSI z97.1

NUMBER OF FLOORS: 3  
 MODEL: Visi-58 / Vision 830

CAPACITY: 840 lbs.  
 NOMINAL SPEED: 40 fpm.

CAB FLOOR AREA: 13.44 Square Feet

CAB INT. HEIGHT: 84 Inches

CAB WEIGHT: 550 lbs.

TOTAL TRAVEL: 224 Inches

PIT DEPTH: 0"

POWER SUPPLY: 60 Hz Single Phase 230V

SAFETIES: 2 Type A Instantaneous Safeties in compliance with ASME A17.1 Sections 2.17.8.1 & 2.17.5.1  
 Mfg: Visilift P/N: VL581001-01

**SUSPENSION:**

TYPE: Galvanized Aircraft Cable 2 X 3/8" dia.

CONSTRUCTION: IWRC 7 X 19 RHRL

NOMINAL STRENGTH: 14,400 lbs.

WT. OF ROPES: 0.243 lbs./ft.

TRAVEL CABLE WT.: 0.228 lbs./ft.

**DRIVETRAIN:**

TYPE: Winding Drum

MOTOR: 1.5 HP with Integrated Brake

TRANSMISSION: Ultra-Low Vibration Helical Drive

MOTOR CONTROL: Pre-Programmed Variable Freq. Drive

DOOR INTERLOCKS: Honeywell RDI-G-L5B certified in compliance with ASME A17.1 Section 2.12.4.3

PIT/FLOOR LOAD: 5699 lbs. (Dead Load) 9719 lbs. (Impact Load)

## SCOPE OF WORK

Installation of a Visilift Visi-58/Vision 830 Elevator by a JOURNEY-LEVEL licensed conveyance mechanic, and meets or exceeds the applicable regulations of all governing agencies and is in conformance with the applicable sections of the most current edition of the following codes and standards:

ASME A17.1 Section 5.3 - 2007 - Safety Code for Elevators and Escalators; Private Residence Elevators

NFPA 70-2008 The National Electric Code

CSA B44.1/ASME A17.5 Elevator and Escalator Electrical Equipment

Local Codes and Regulations, as applicalbe.

After installation the unit will be inspected by an inspector as required by local laws.

|  |  |   |  |           |      |  |  |
|--|--|---|--|-----------|------|--|--|
| <p style="text-align: center;"><b>PROPRIETARY AND CONFIDENTIAL</b></p> <p style="font-size: small;">THE INFORMATION CONTAINED IN THIS DRAWING IS THE SOLE PROPERTY OF VISILIFT, LLC. ANY REPRODUCTION IN PART OR AS A WHOLE WITHOUT THE WRITTEN PERMISSION OF VISILIFT, LLC IS PROHIBITED.</p> |  | UNLESS OTHERWISE SPECIFIED:   |  | NAME      | DATE | <h3 style="margin: 0;">VISILIFT, LLC</h3>                        |  |
|  |  | DIMENSIONS ARE IN INCHES<br>TOLERANCES:<br>FRACTIONAL ±<br>ANGULAR: MACH ± BEND ±<br>TWO PLACE DECIMAL ±<br>THREE PLACE DECIMAL ± |  | DRAWN     |      |  |  |
|  |  | INTERPRET GEOMETRIC TOLERANCING PER:  |  | CHECKED   |      | SIZE <b>B</b> DWG. NO. Vision-58/Vision 830 - Specifications REV |  |
|  |  | MATERIAL  |  | ENG APPR. |      |  |  |
|  |  | FINISH  |  | MFG APPR. |      | Printed: 5/13/2010<br>Last Saved: 1/9/2012                       |  |
|  |  | NEXT ASSY USED ON   |  | Q.A.      |      |  |  |
|  |  | APPLICATION   |  | COMMENTS: |      | Printed: 5/13/2010<br>Last Saved: 1/9/2012                       |  |
|  |  | DO NOT SCALE DRAWING  |  |           |      |  |  |

**Installation Specifications:**

Landing 1 "Base Ring" shall be secured against lateral shifts with no less than 4 fasteners determined to be of the Concrete Anchor "Tapcon®" type and shall be 3/16" or larger in diameter and minimum 2" in length. Recommended Fastenal® MPN: 0217582

Landings 2 and 3 "Balconies" shall be secured against lateral shifts with no less than 4 fasteners determined to be of the Wood Screw type, M7 or larger in diameter and minimum 50mm in length. Recommended Fastenal® MPN: 10230-05241

DETAIL A illustrates the lateral mounting locations for Landing 1.

DETAIL B illustrates the lateral mounting locations for Landings 2 and 3.

**Floor Load Information:**

Vertical Loads:

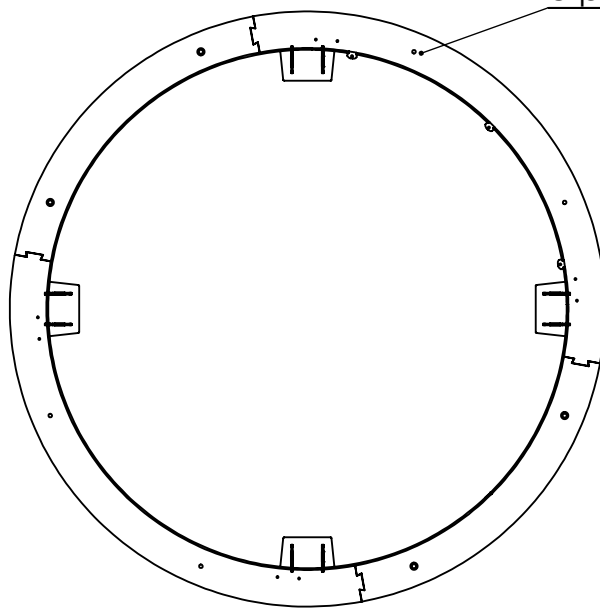
- **Ground Floor**
  - Dead Load: (104 x Ft. of Hoistway) + (318 x # of Floors) + 1686 = 5699 lbs
  - Impact Load: 4020 lbs
  - Total Load (Dead Load + Impact Load): 9719 lbs
- **All Other Floors**
  - 543 lbs

Lateral Loads:

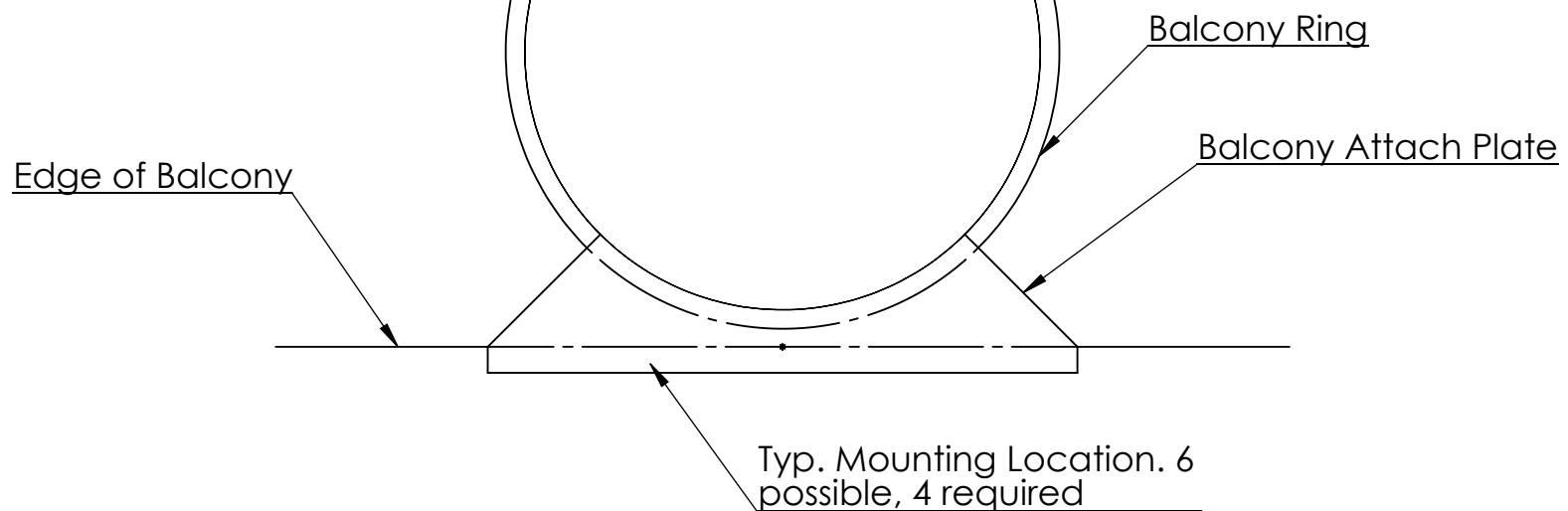
- **All Floors**
  - 200 lbs

DETAIL A

Typ. Mounting Location.  
8 possible, 4 required.



DETAIL B



Design, manufacturing and installation complies with ASME A17.1 2007, Section 5.3

Design, manufacturing and installation complies with NEC 2008

**PROPRIETARY AND CONFIDENTIAL**  
THE INFORMATION CONTAINED IN THIS DRAWING IS THE SOLE PROPERTY OF VISILIFT, LLC. ANY REPRODUCTION IN PART OR AS A WHOLE WITHOUT THE WRITTEN PERMISSION OF VISILIFT, LLC IS PROHIBITED.

|             |  |   |  |  |      |  |  |
|-------------|--|---|--|--|------|--|--|
|             |  | UNLESS OTHERWISE SPECIFIED:   |  | NAME   | DATE | <b>VISILIFT, LLC</b>                   |  |
|             |  | DIMENSIONS ARE IN INCHES<br>TOLERANCES:<br>FRACTIONAL ±<br>ANGULAR: MACH ± BEND ±<br>TWO PLACE DECIMAL ±<br>THREE PLACE DECIMAL ± |  | DRAWN  |      |  |  |
|             |  | INTERPRET GEOMETRIC TOLERANCING PER:  |  | ENG APPR.  |      | SIZE DWG. NO. REV<br><b>B</b> Addendum |  |
|             |  | MATERIAL  |  | MFG APPR.  |      |  |  |
|             |  | FINISH  |  | Q.A.   |      | SCALE: 1:20 WEIGHT: SHEET 7 OF 7       |  |
| APPLICATION |  | DO NOT SCALE DRAWING  |  | COMMENTS:<br>Printed: 1/9/2012<br>Last Saved: 1/9/2012 |      |  |  |